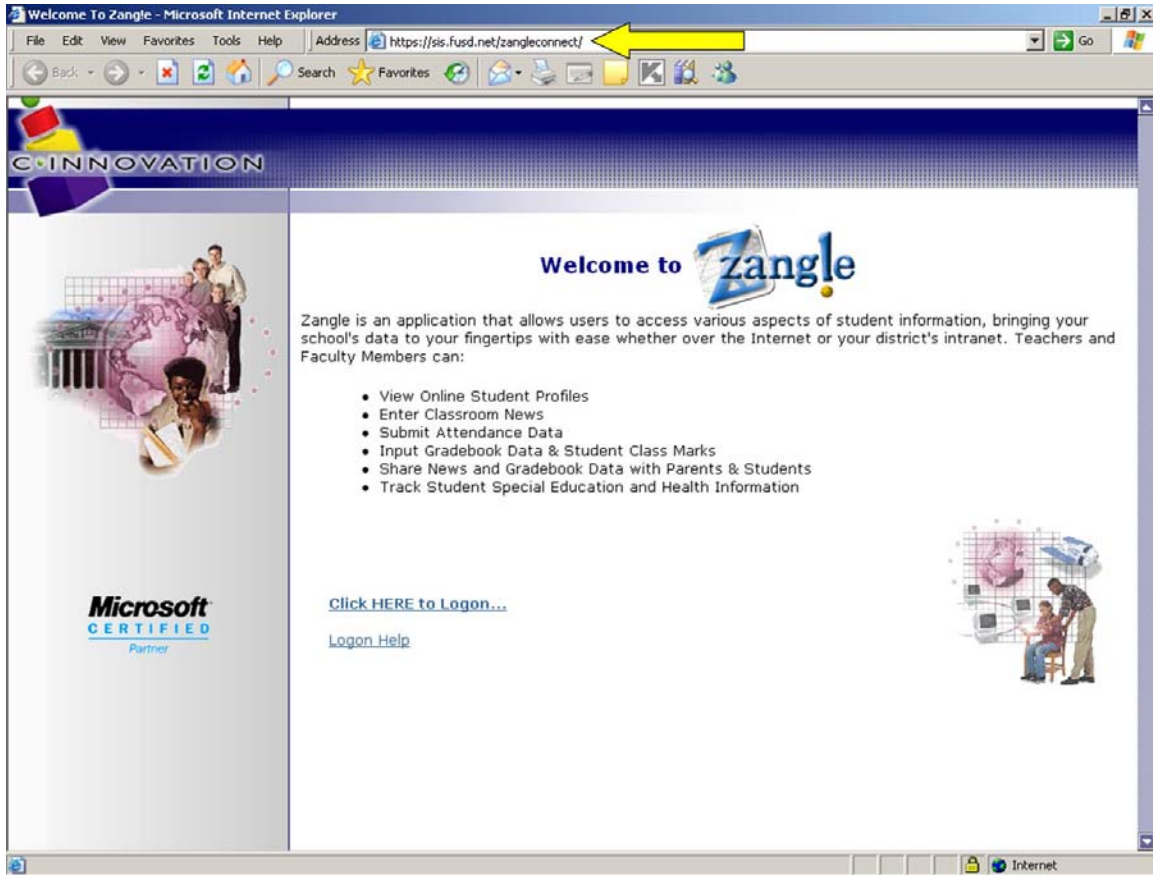
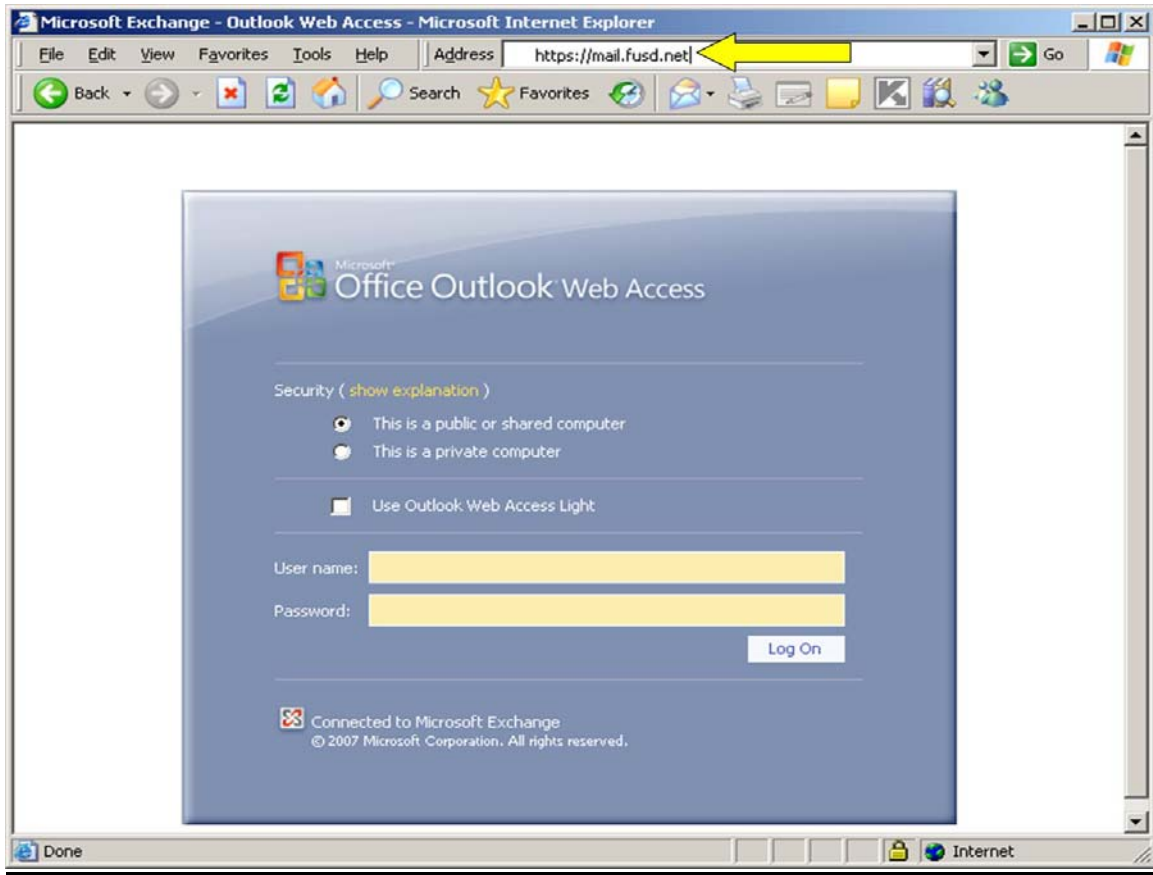


## DIY: How to Create Desktop Shortcuts to Zangle & District E-mail

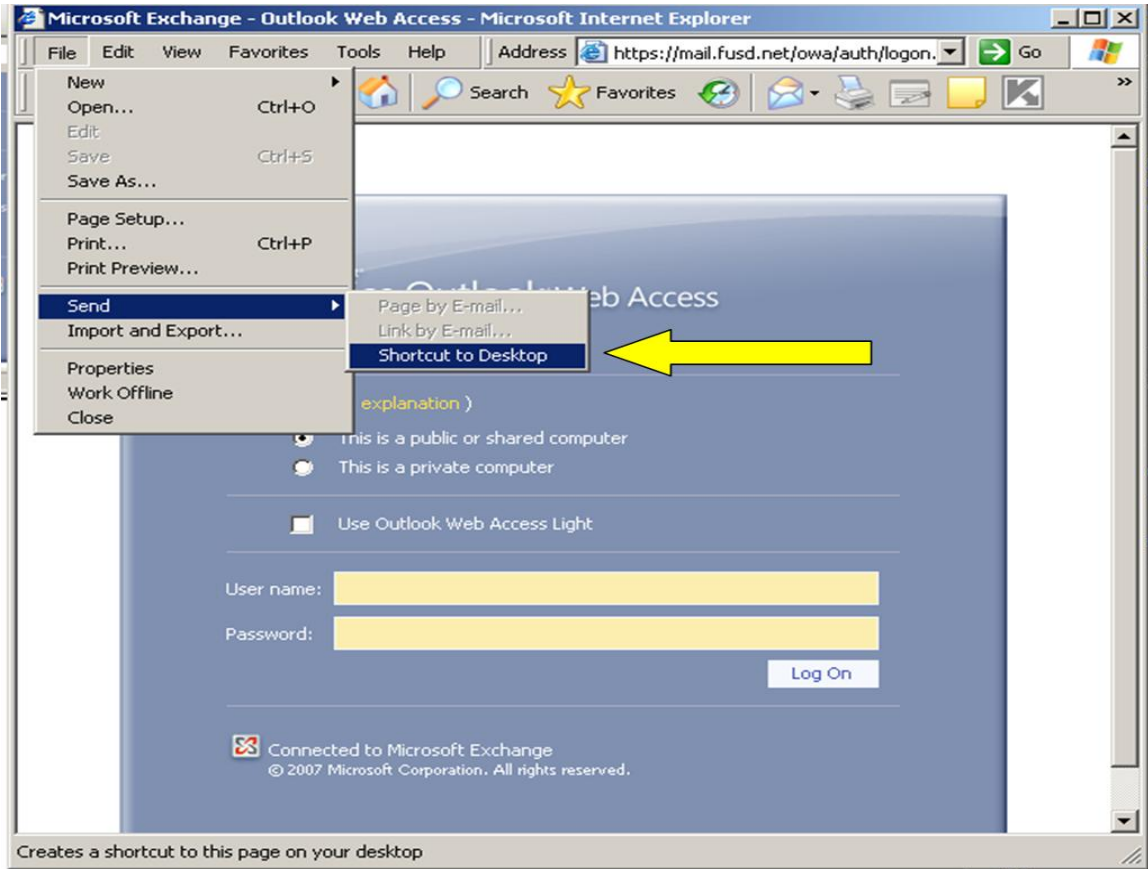
1. Zangle Teacher Connection can be accessed by opening Internet Explorer and typing in the following URL in the address box: <https://sis.fusd.net/zangleconnect>



2. The district Outlook E-mail Exchange server can be accessed by opening Internet Explorer and typing in the following URL in the address box: <https://mail.fusd.net>



3. The next step is to create a desktop shortcut for Zangle & E-mail. To create a shortcut, simply select File>Send>Shortcut to Desktop.



\*\*\*You may also want to save both of these links in your Favorites\*\*\*